



# GAT MONTHLY MEMBERSHIP PROGRESS REPORT

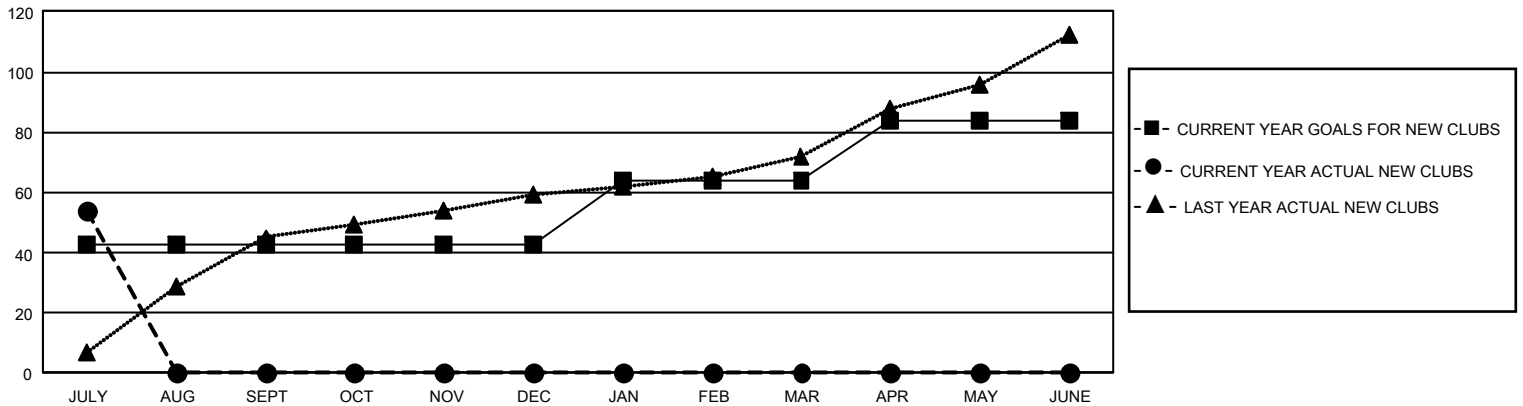
Results as of: 7/31/2025

## GMT Constitutional Area 6 - I, Group F

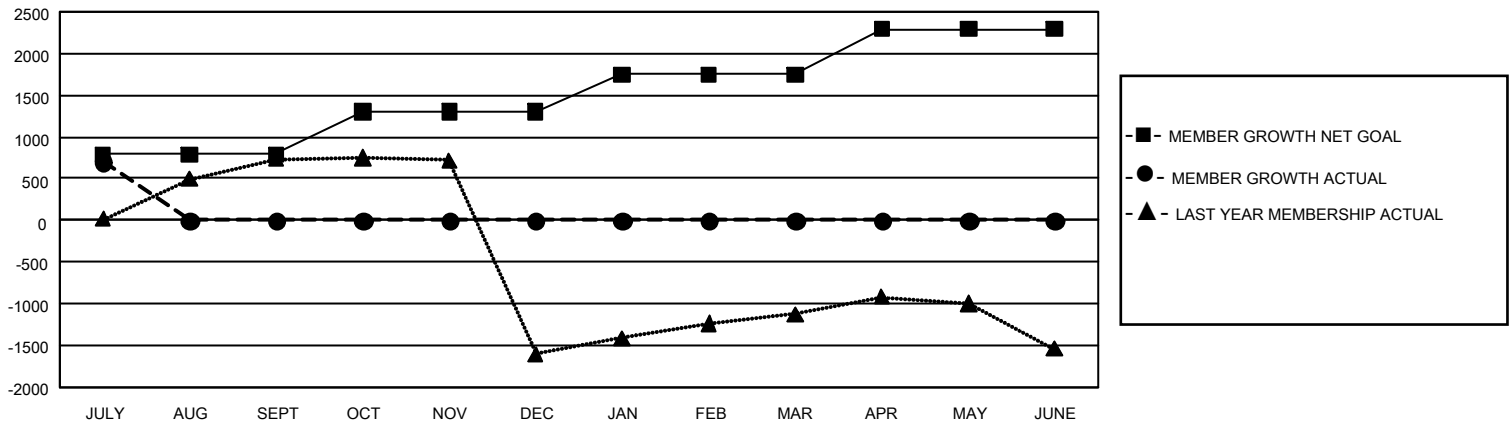
REPORT DOES NOT INCLUDE CLUBS IN UNDISTRICTED AREAS.

Clubs				Members			
RESULTS FOR 2025-2026				RESULTS FOR 2025-2026			
QUARTER	NEW CLUB GOAL	NEW CLUBS	DROPPED CLUBS	QUARTER	MEMBER GROWTH NET GOAL	MEMBER GROWTH ACTUAL	DROPPED MEMBERS ACTUAL (including transfers)
JULY/AUG/SEPT	129	54	1	JULY/AUG/SEPT	790	1,762	923
OCT/NOV/DEC	0	0	0	OCT/NOV/DEC	515	0	0
JAN/FEB/MAR	63	0	0	JAN/FEB/MAR	442	0	0
APR/MAY/JUNE	60	0	0	APR/MAY/JUNE	545	0	0

GOALS AND ACTUAL NEW CLUBS CUMULATIVE



GOALS AND ACTUAL MEMBERS CUMULATIVE



DROPPED CLUBS: 1

222 CLUBS OF 1,228 ADDED 1 OR MORE NEW MEMBERS

### GENDER DISTRIBUTION

MALE	22,570 (73.07%)
FEMALE	8,308 (26.90%)
NON BINARY	0 (0.00%)
PREFER NOT TO ANSWER	10 (0.03%)

### DROPPED MEMBERS

DECEASED	5
CLUB CANCELLED	22
OTHER	893
<b>TOTAL</b>	<b>920</b>

[CLICK HERE FOR CUMULATIVE MEMBERSHIP DATA](#)

TOTAL FAMILY UNIT MEMBERS	11,329
FAMILY MEMBERS PAYING HALF DUES	6,870